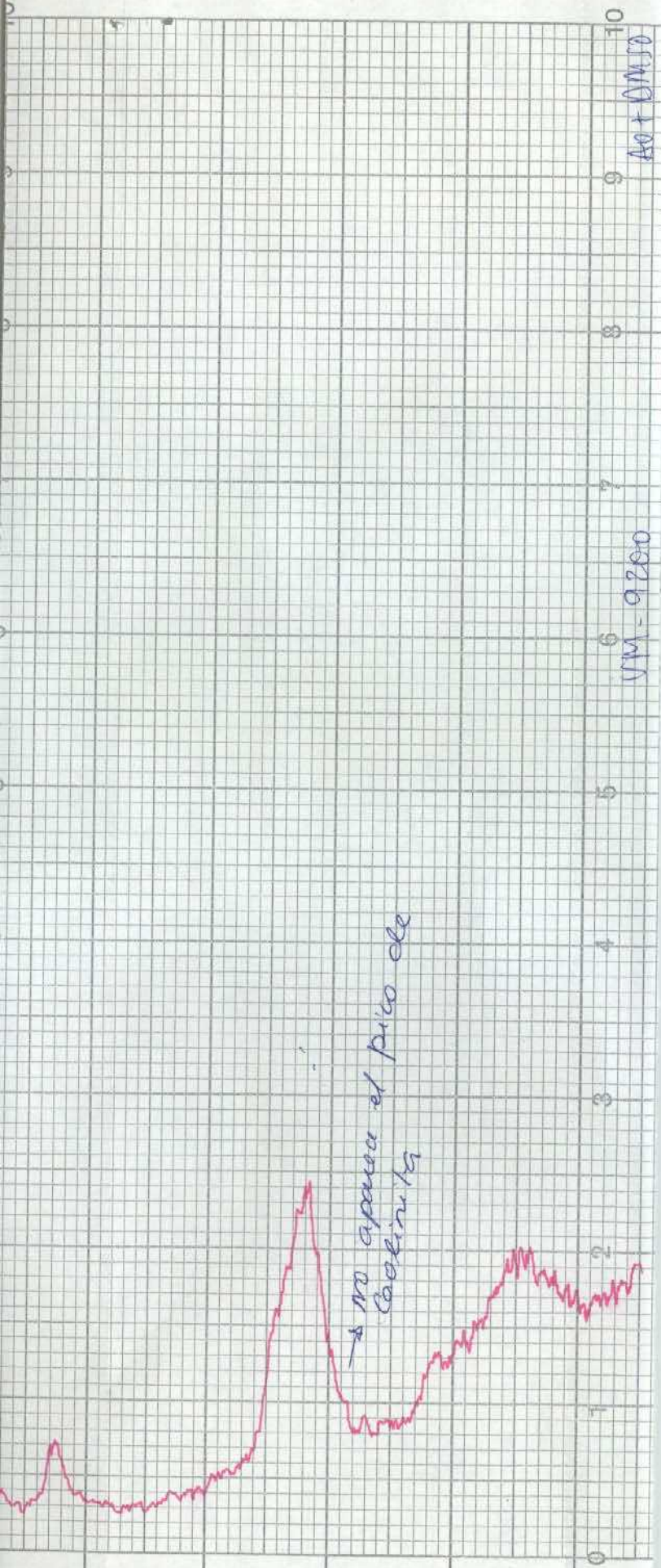


MIN. ARGILLA - 45%
 CUARZO - 9%
 FELDSPATOS - 5%
 CALCITA - 36%
 DOLOMITA - 5%
 FTU TH - no cuantificable en polvo

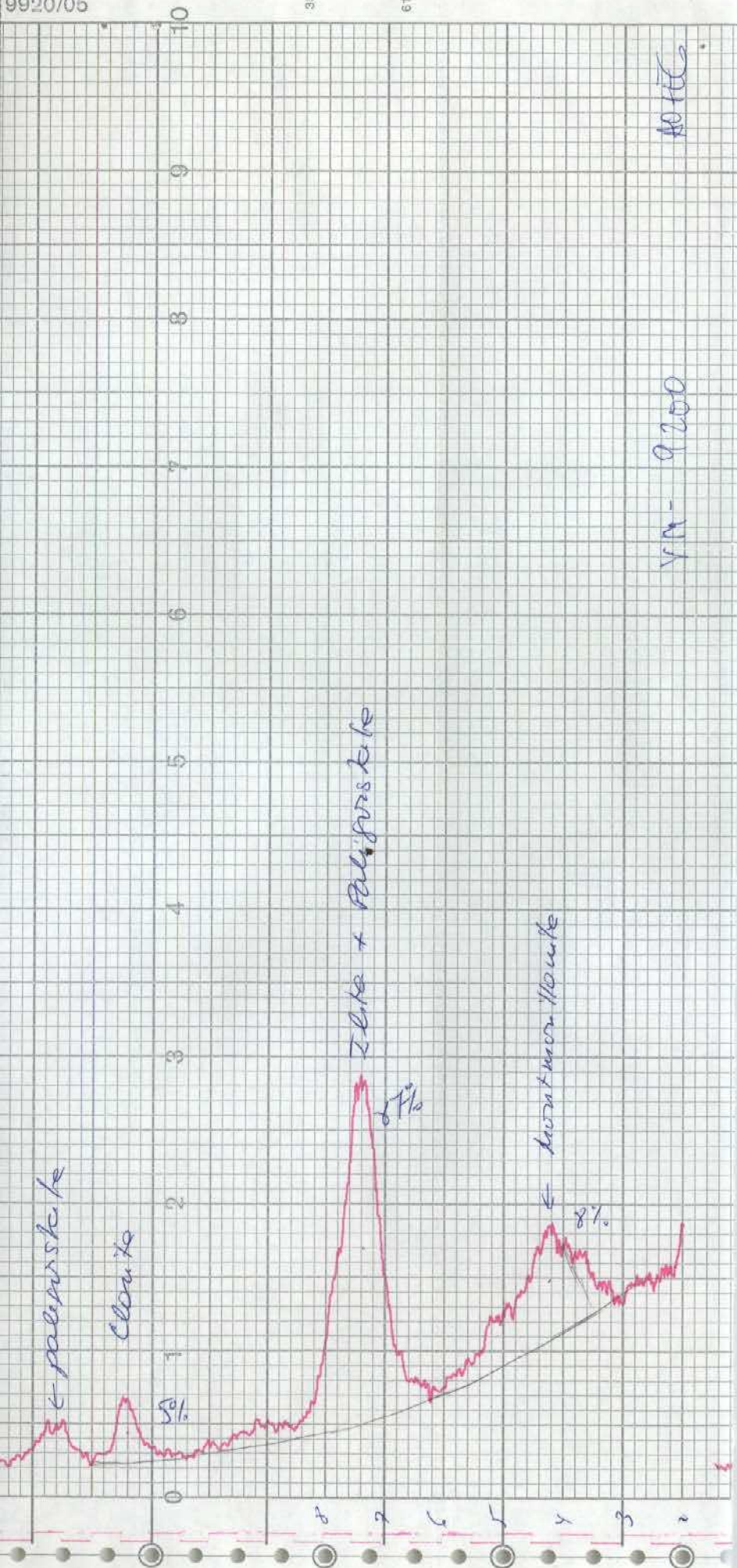
PHILIPS PM 920/05
 35306
 61409
 PHILIPS PM 920/05



no aparece el pico de CaOH₂

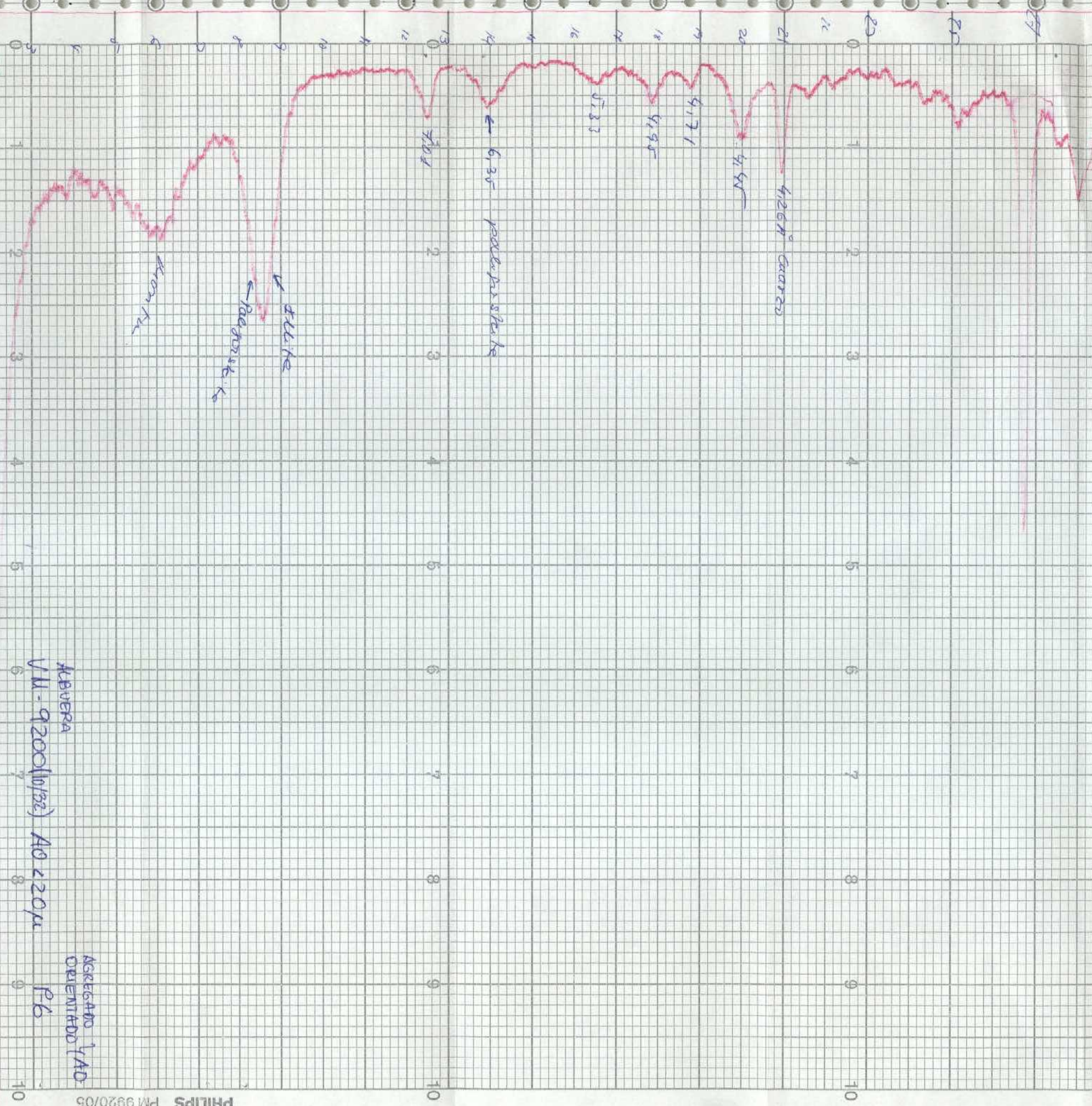
VM-9200

A0 + DM50



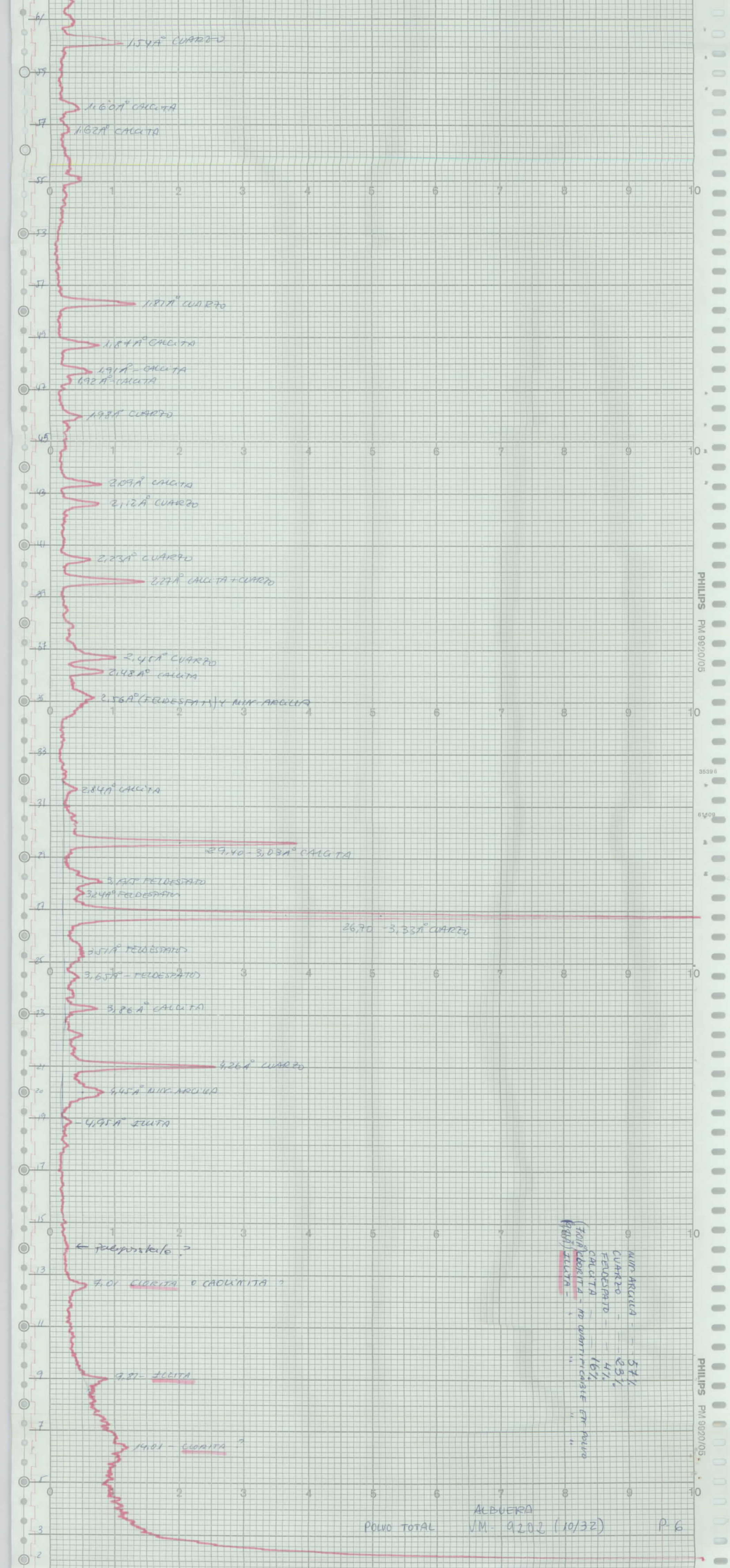
YM-9200

NOTES



ABUERA
 VM-9200(10/32) AO 220µ

AGREGADO YAO
 ORIENTADO Pb



154A CUARZO

160A CALCITA

162A CALCITA

181A CUARZO

184A CALCITA

191A - CALCITA

192A - CALCITA

198A CUARZO

209A CALCITA

212A CUARZO

223A CUARZO

227A CALCITA + CUARZO

245A CUARZO

248A CALCITA

256A (FELDSPATO) Y MIN. ARCILLA

284A CALCITA

29.40 - 3.03A CALCITA

314A FELDSPATO

324A FELDSPATO

26.70 - 3.33A CUARZO

357A FELDSPATO

3.65A - FELDSPATO

3.86A CALCITA

4.26A CUARZO

4.45A MIN. ARCILLA

4.95A ILUTA

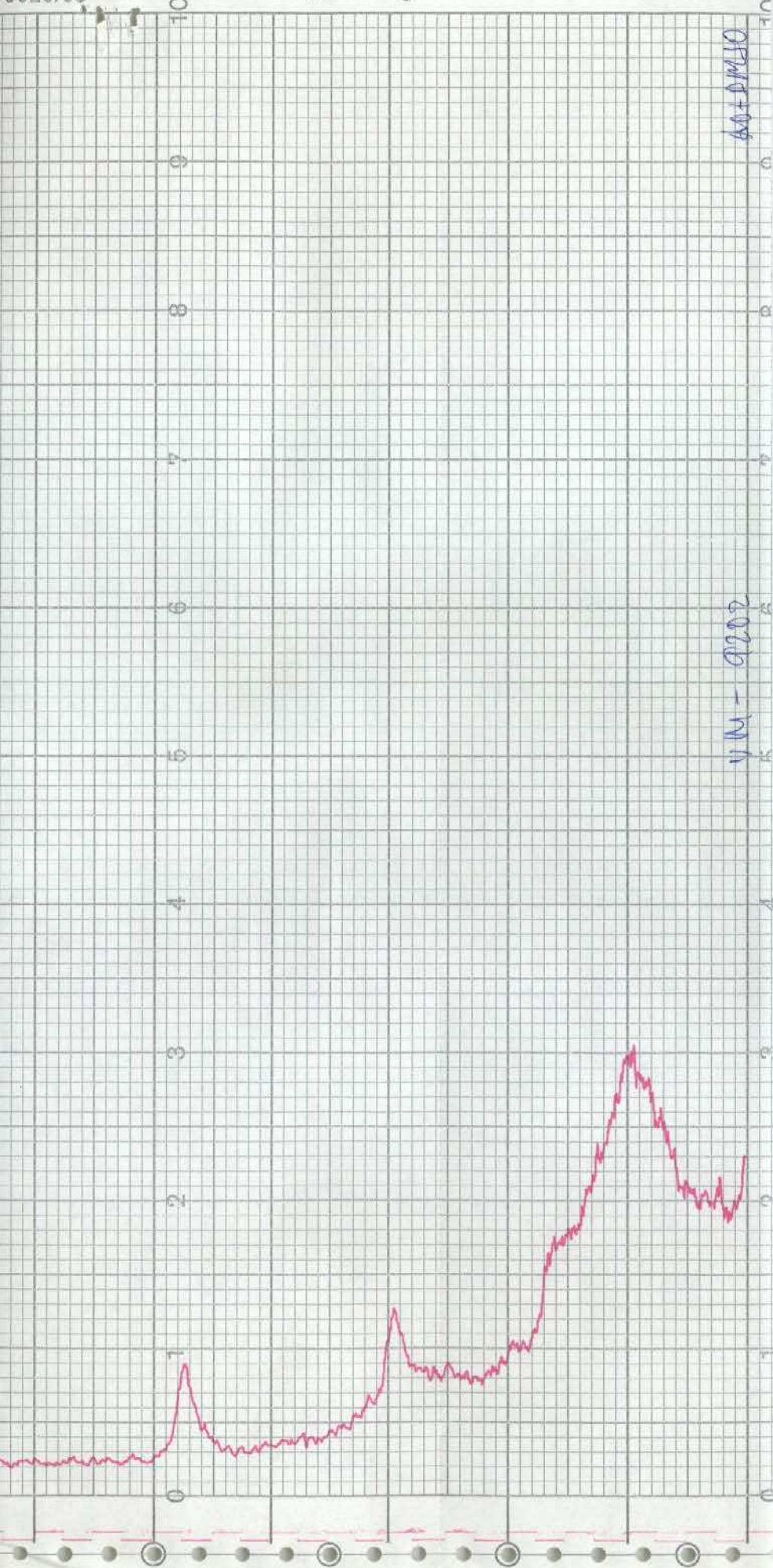
← respuesta?

7.01 CLORITA o CAOLINITA?

9.81 - ILUTA

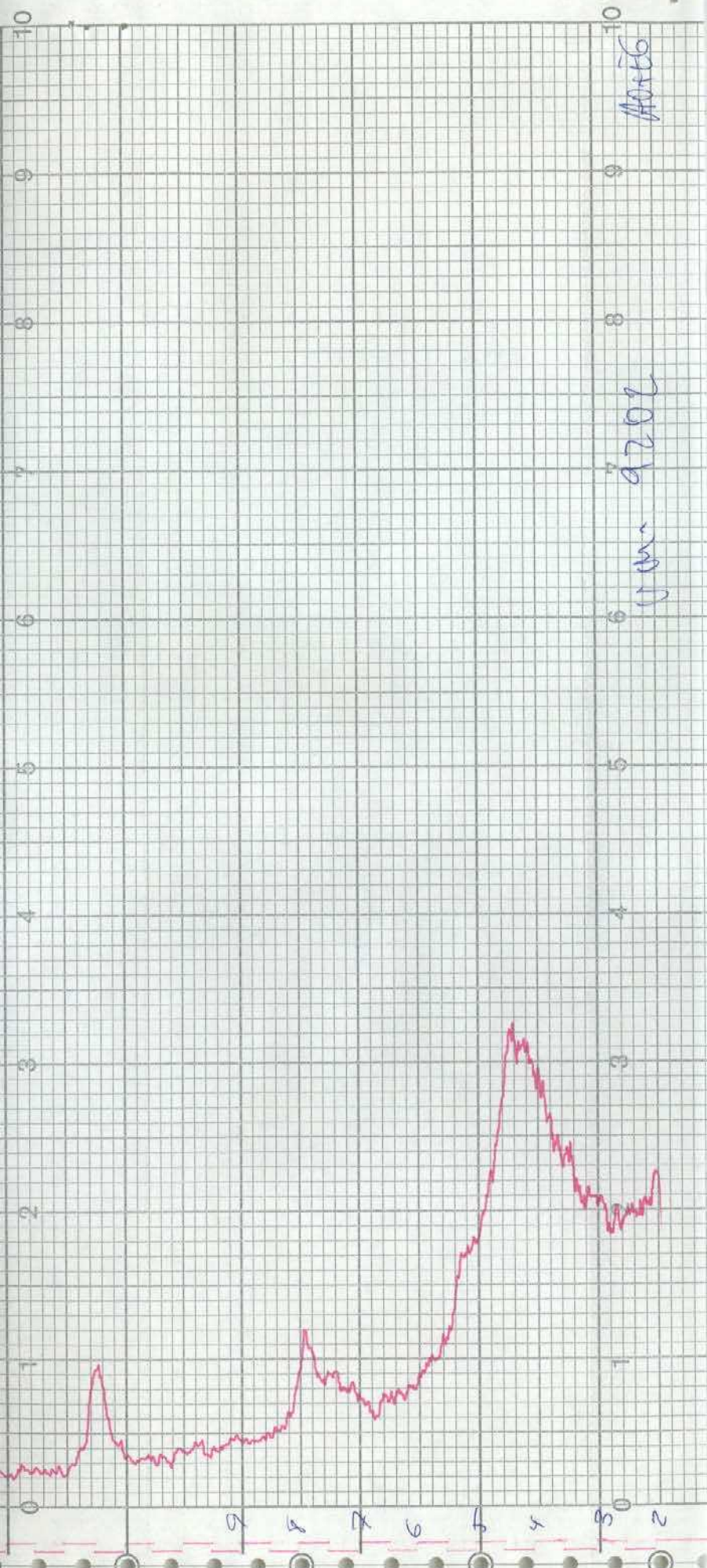
14.01 - CLORITA?

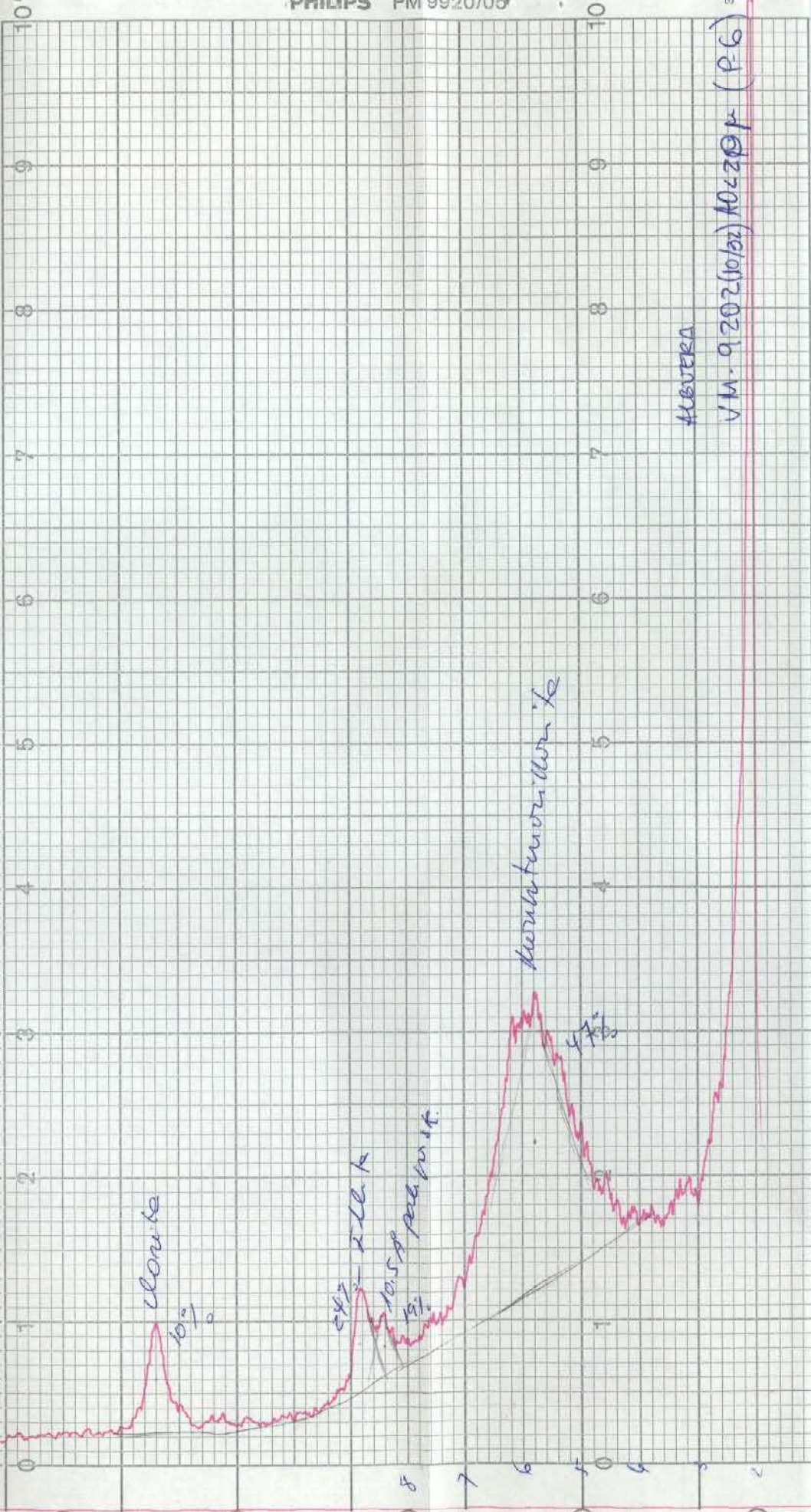
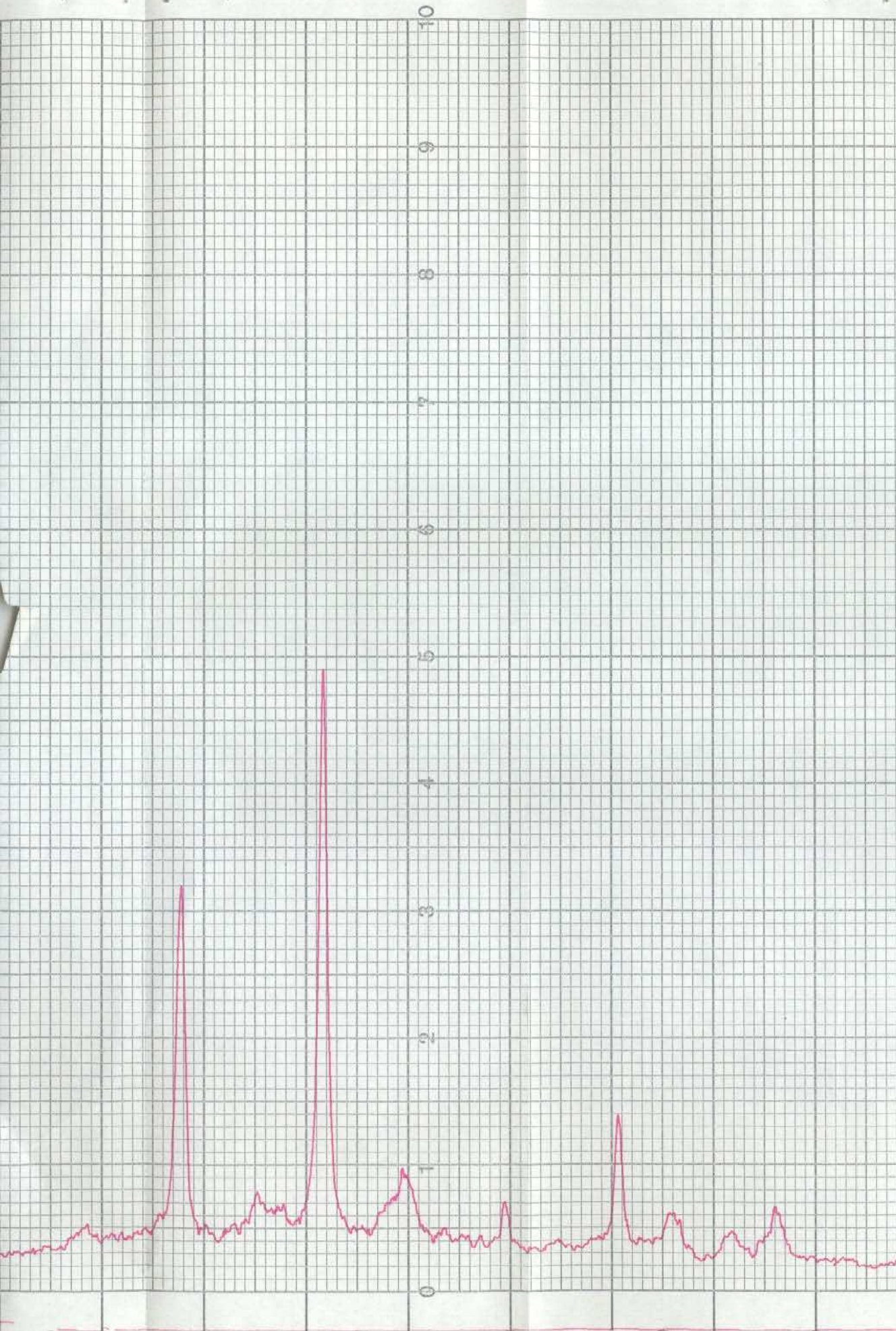
MIN. ARCILLA - 57%
 CUARZO - 23%
 FELDSPATO - 4%
 CALCITA - 16%
 CLORITA - no cuantificaste en polvo



AA+PM10

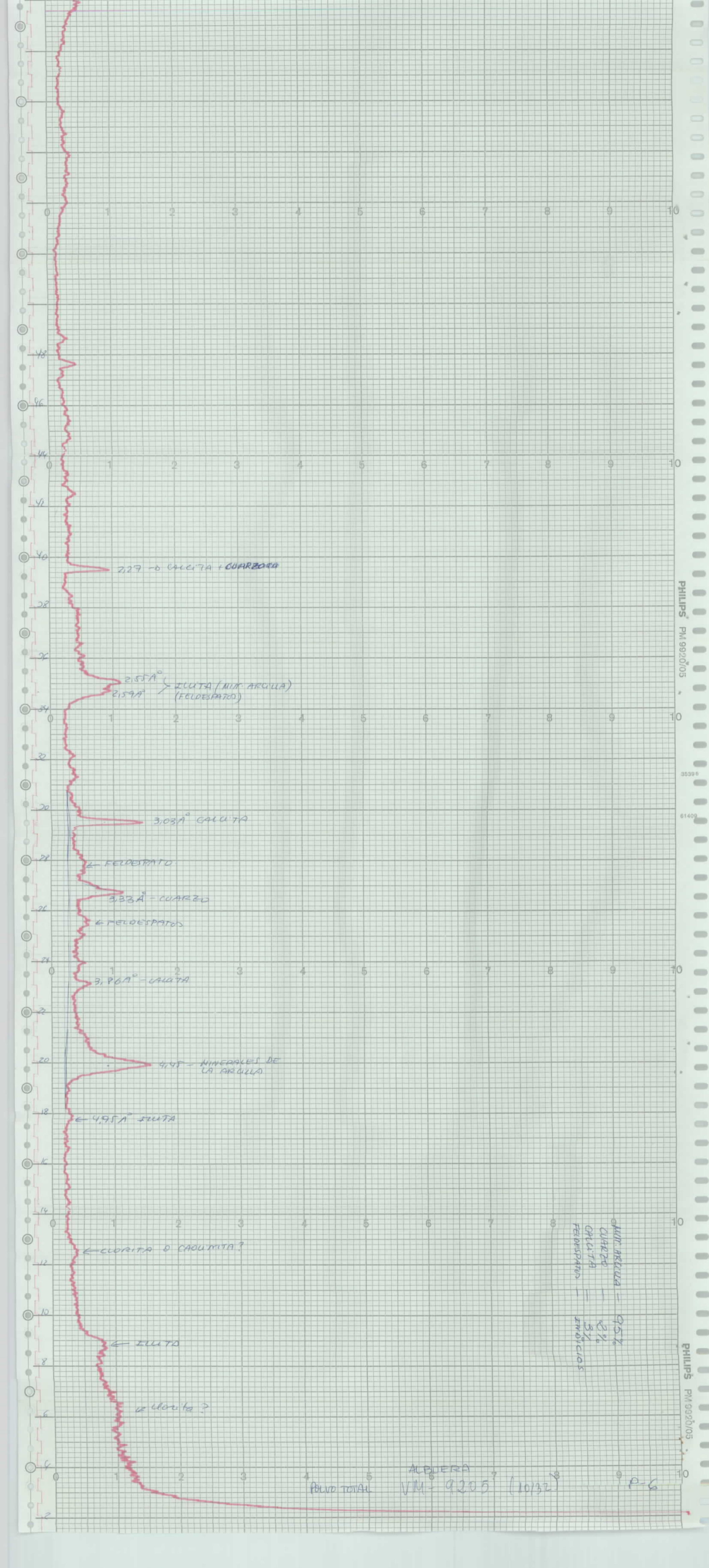
VN - 9202





ALBUERA

VM-9202(10/02) 10-2004 (P-6)



2.27 -> CALCITA + CUARZITA

2.55Å
2.59Å } ILUTA (MIT. ARULLA)
(FELDSPATO)

3.03Å CALCITA

← FELDSPATO

3.33Å - CUARZO

← FELDSPATO

3.96Å - CALCITA

4.95 - MINERALES DE LA ARULLA

← 4.95Å ILUTA

← CLORITA O CAQUIMITA?

← ILUTA

← CLORITA?

MIN. ARULLA - 95%
CUARZO - 2%
CALCITA - 3%
FELDSPATO - 5%
INDICIOS

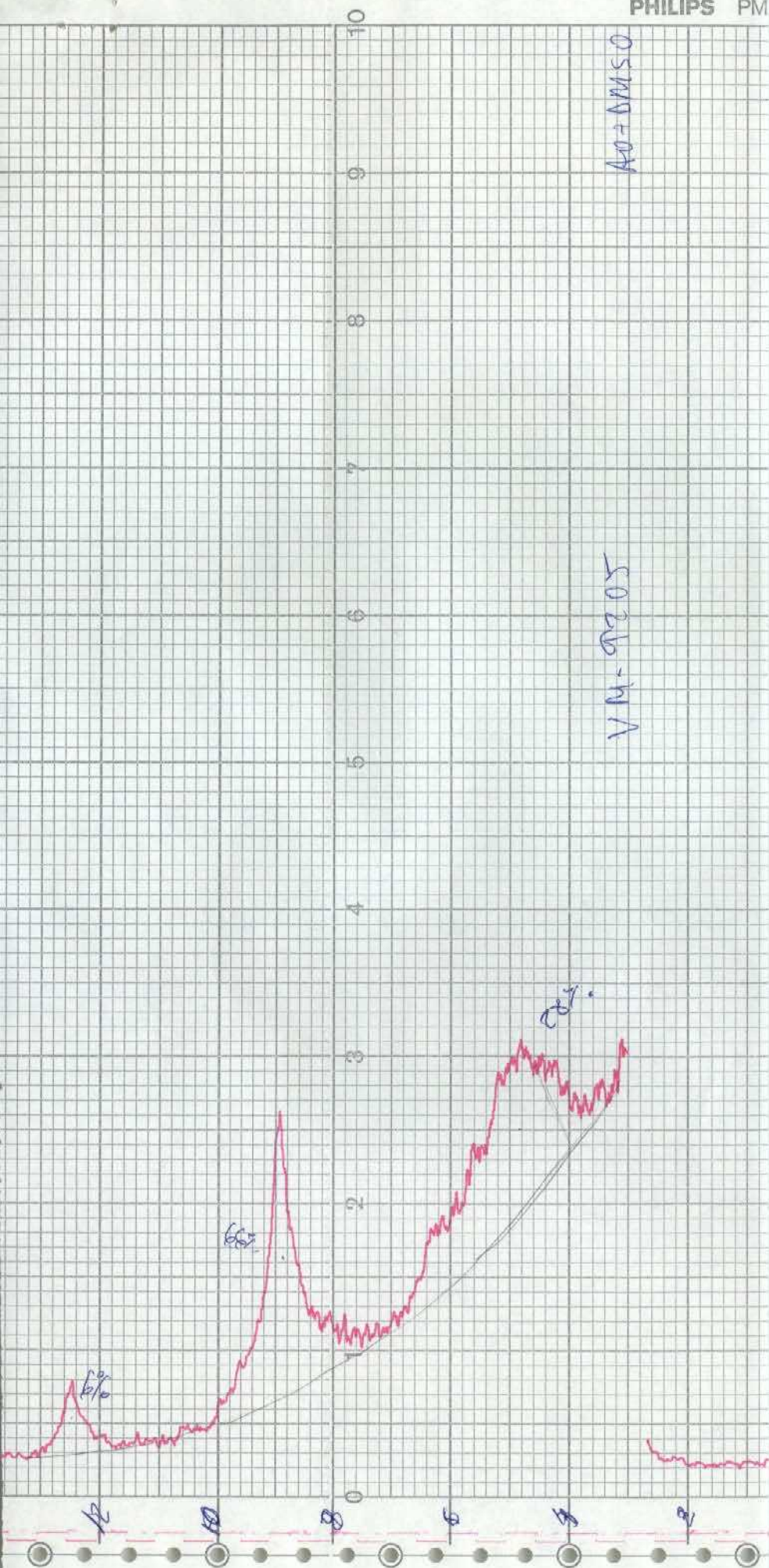
ALBUERA VM-9205 (10132) P-6
Polvere TOTAL

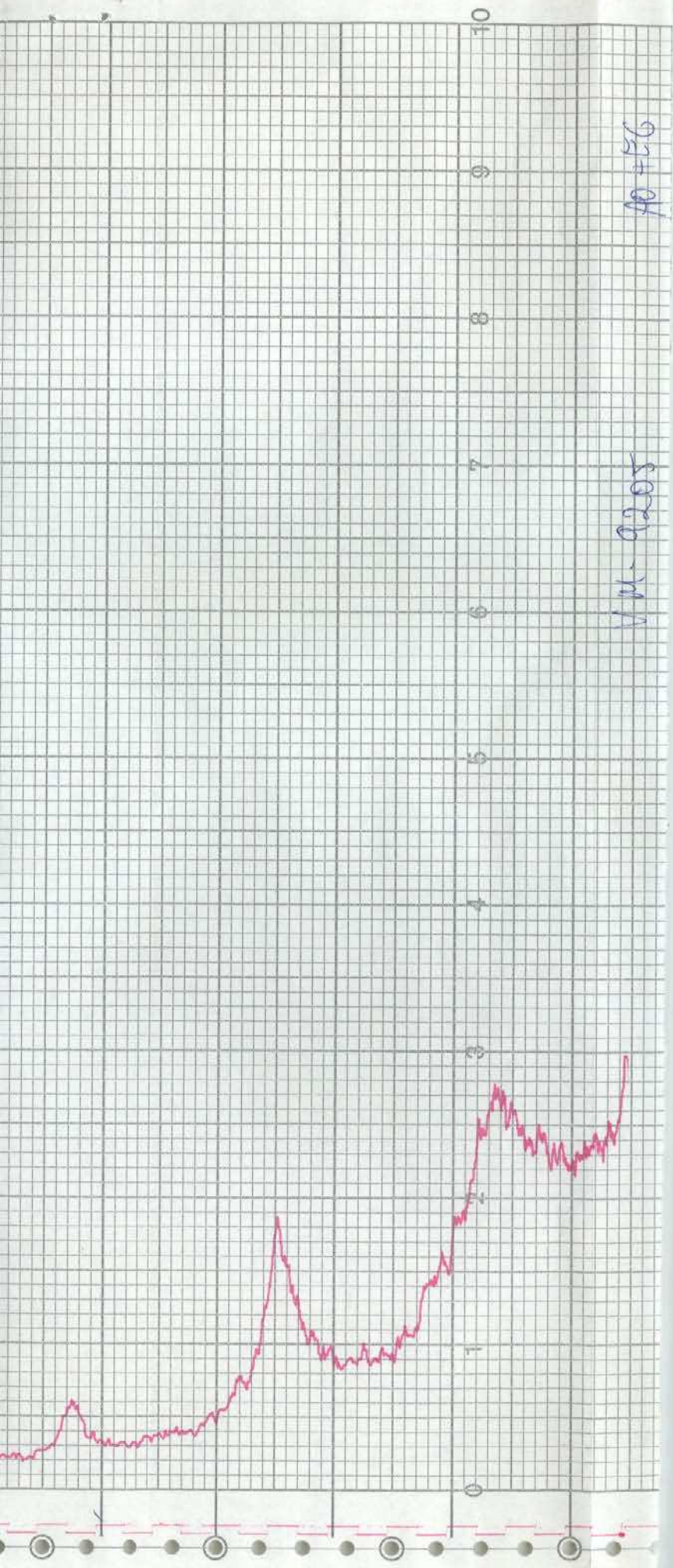
PHILIPS PM 9920/05

35396

61409

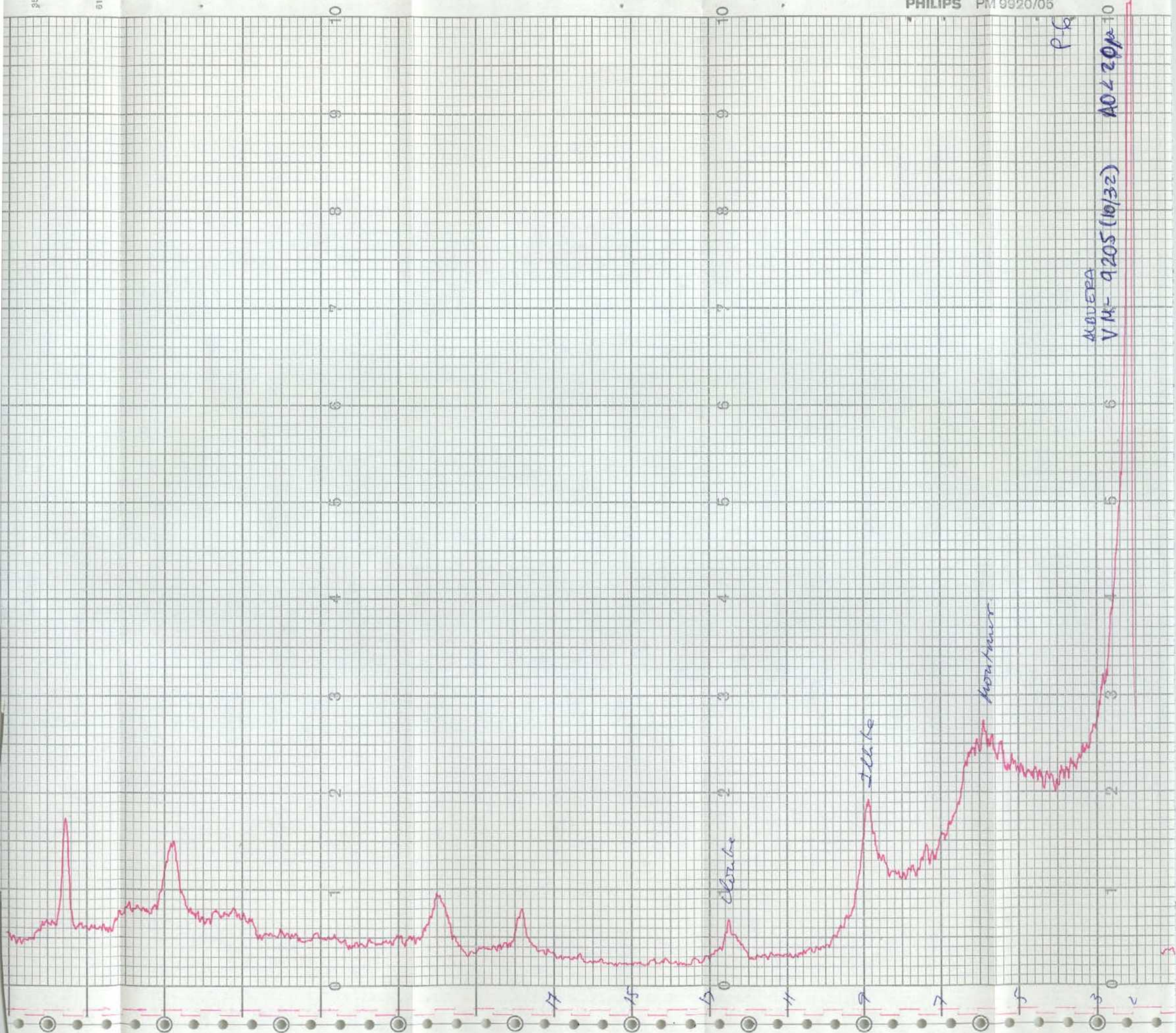
PHILIPS PM 9920/05





VM-9205

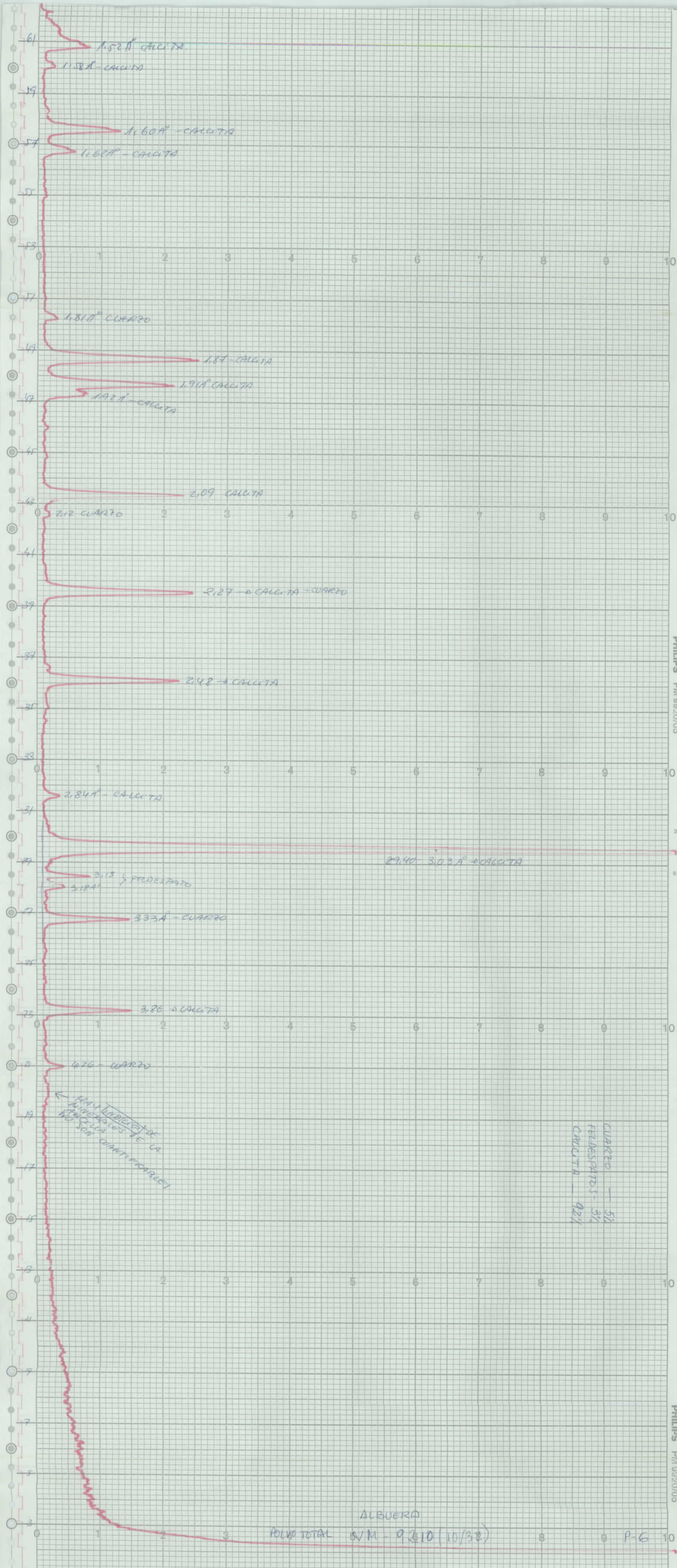
70+56



AGUERA
VM-9205 (10/32)

P6

AO 420 p 10



61 1.52° CALCITA

1.58° - CALCITA

19 1.60° - CALCITA

57 1.62° - CALCITA

51 1.81° CUARZO

49 1.84° - CALCITA

1.91° - CALCITA

47 1.92° - CALCITA

45 2.09° CALCITA

43 2.12° CUARZO

41 2.27° - CALCITA - CUARZO

39 2.48° - CALCITA

37 2.84° - CALCITA

35 29.40° 3.03° - CALCITA

33 3.13° FELDSPATO

3.18°

31 3.33° - CUARZO

29 3.86° - CALCITA

27 4.26° - CUARZO

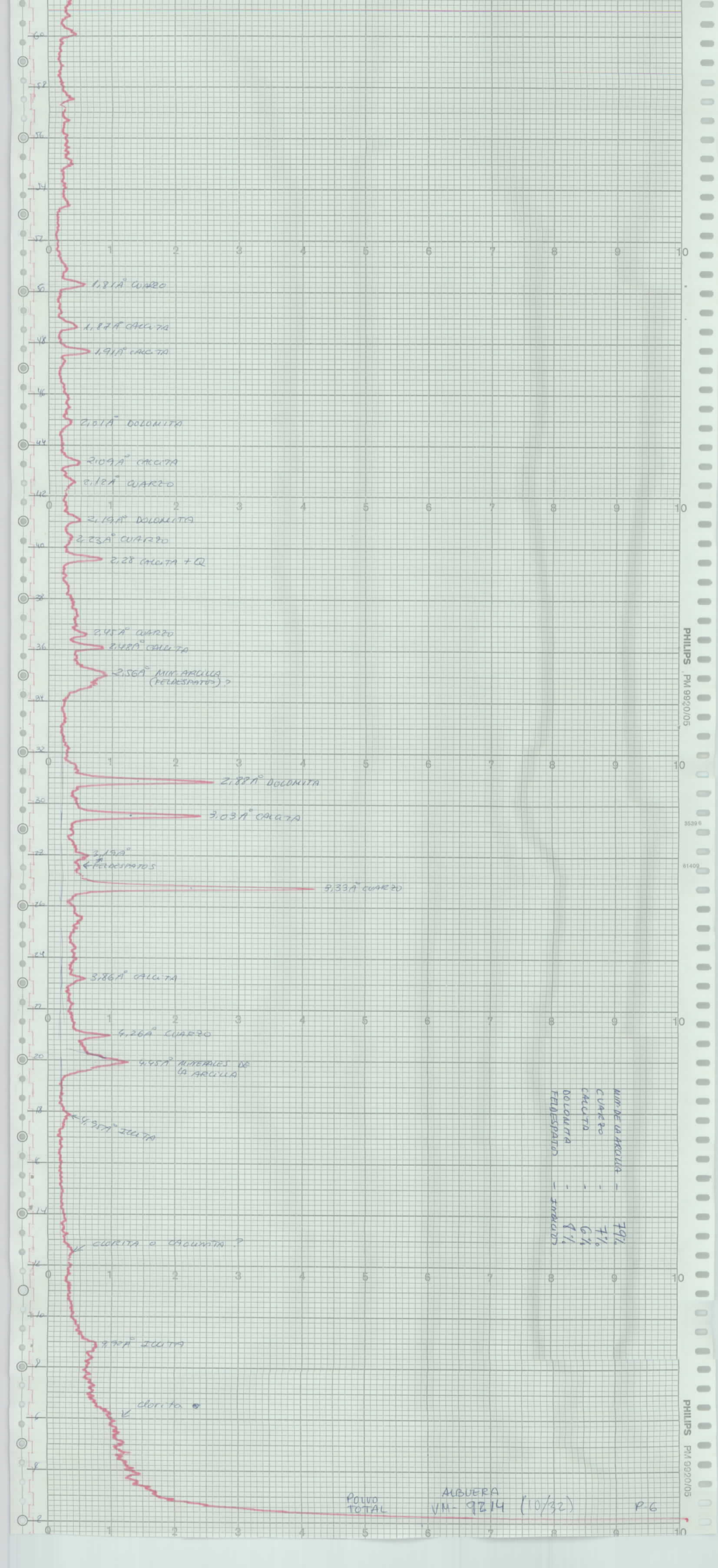
19 \leftarrow HAY UN GRUPO DE
LÍNEAS QUE NO SON
CANTIFICABLES

CUARZO - 5%
FELDSPATOS - 3%
CALCITA - 92%

ALBUERA

POV. TOTAL SVM - 9210 (10/32)

P-6



10

9

8

7

6

5

4

3

2

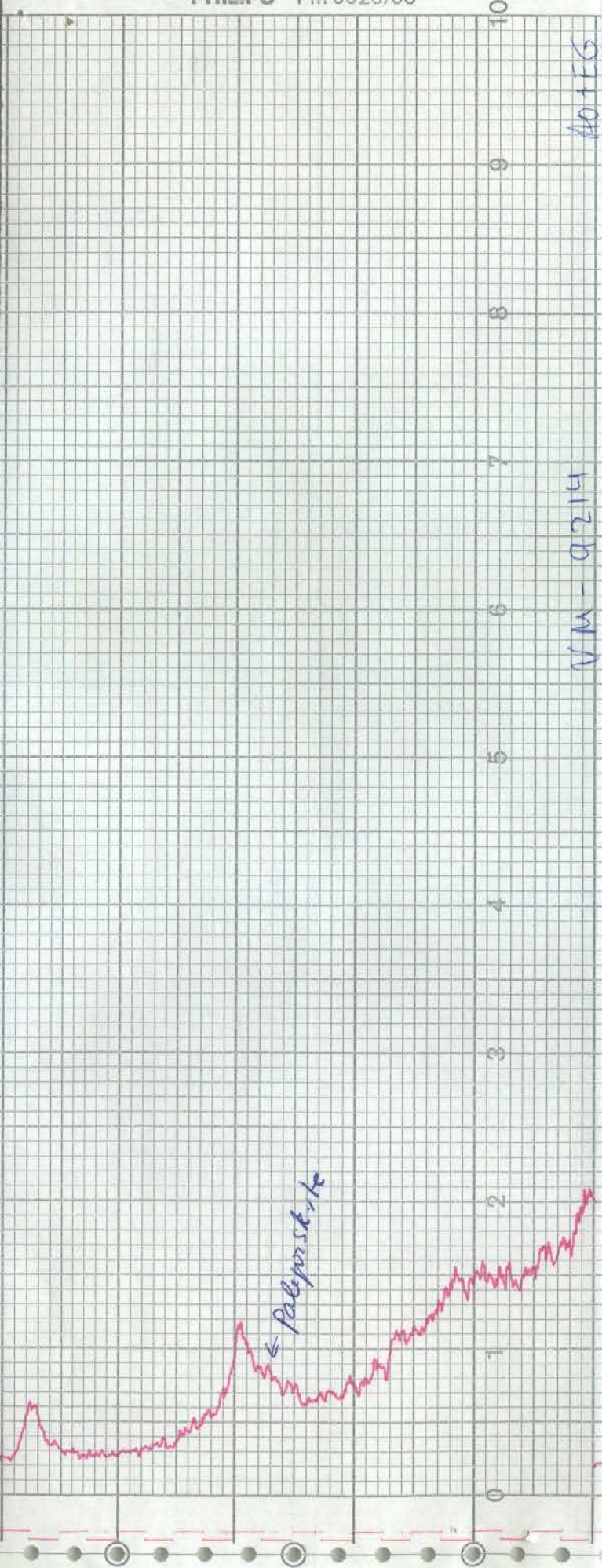
1

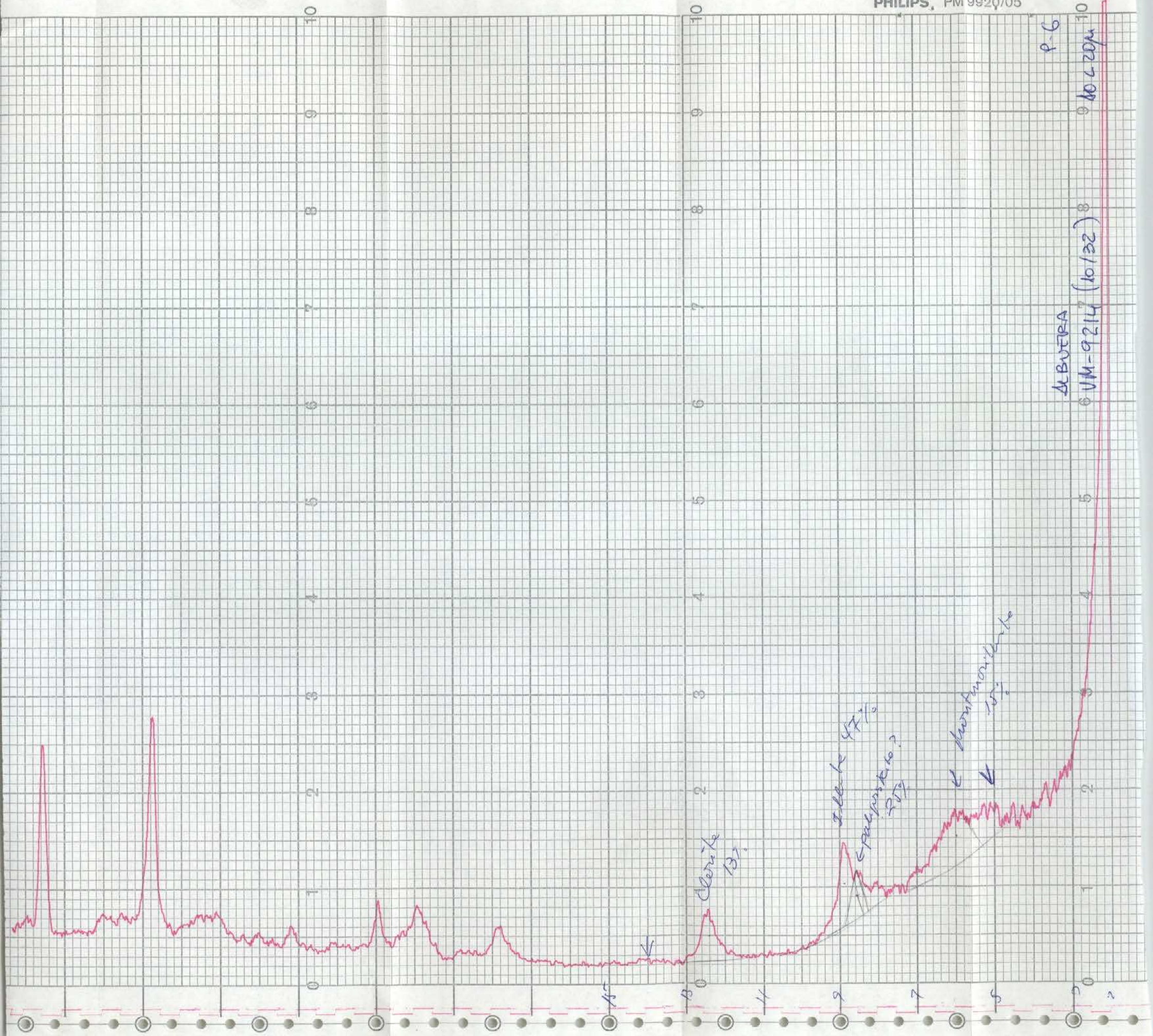
0

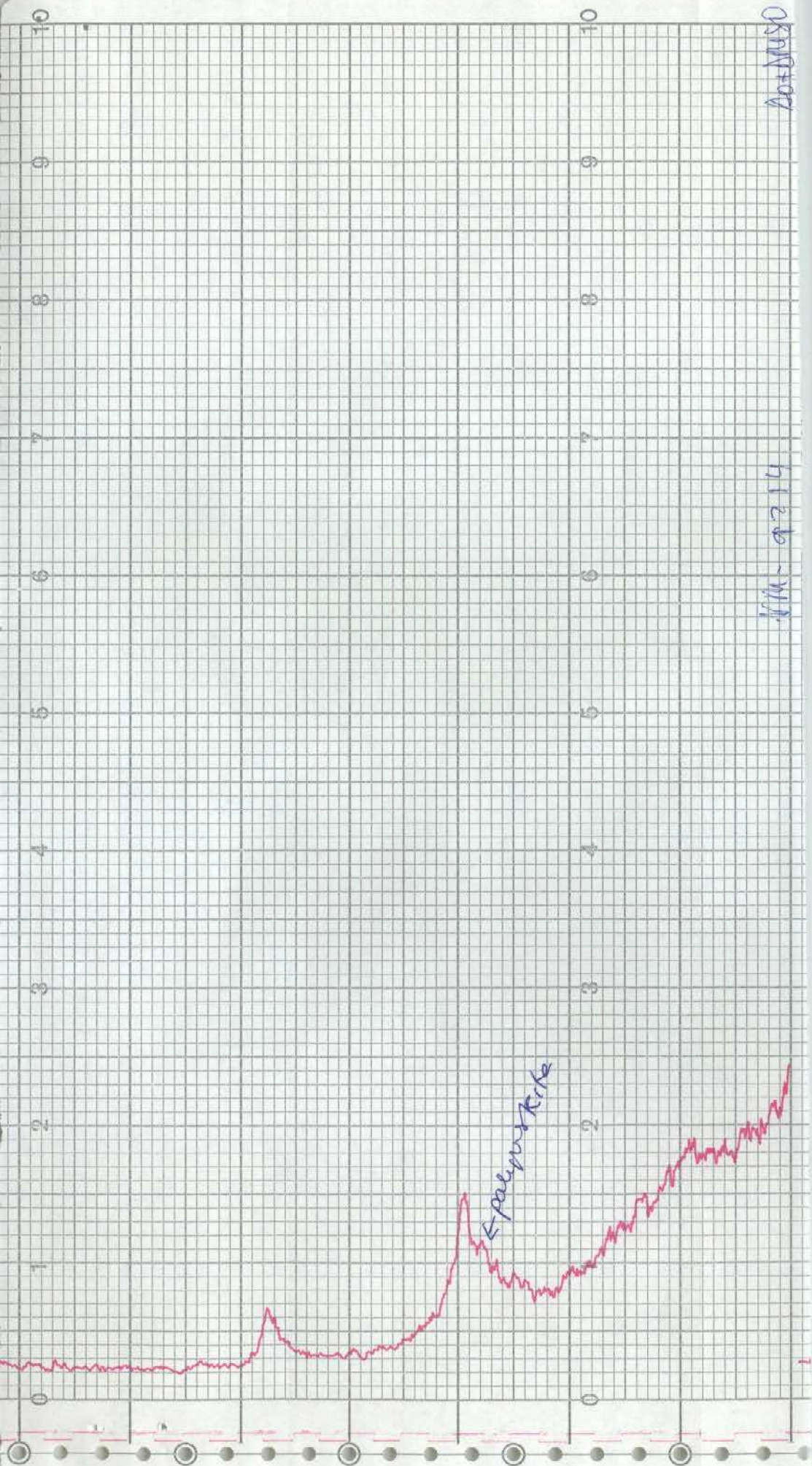
401EG

VM-9214

← Palpeprst. k

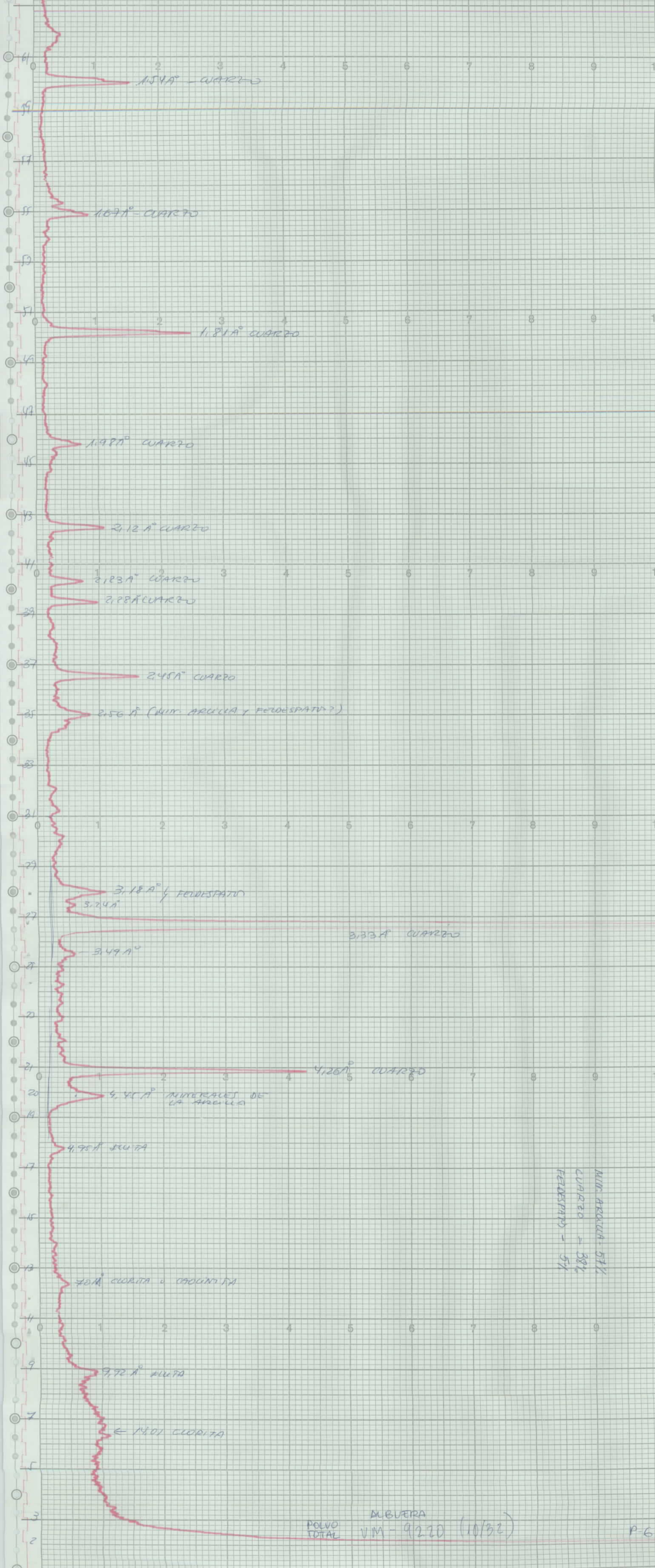






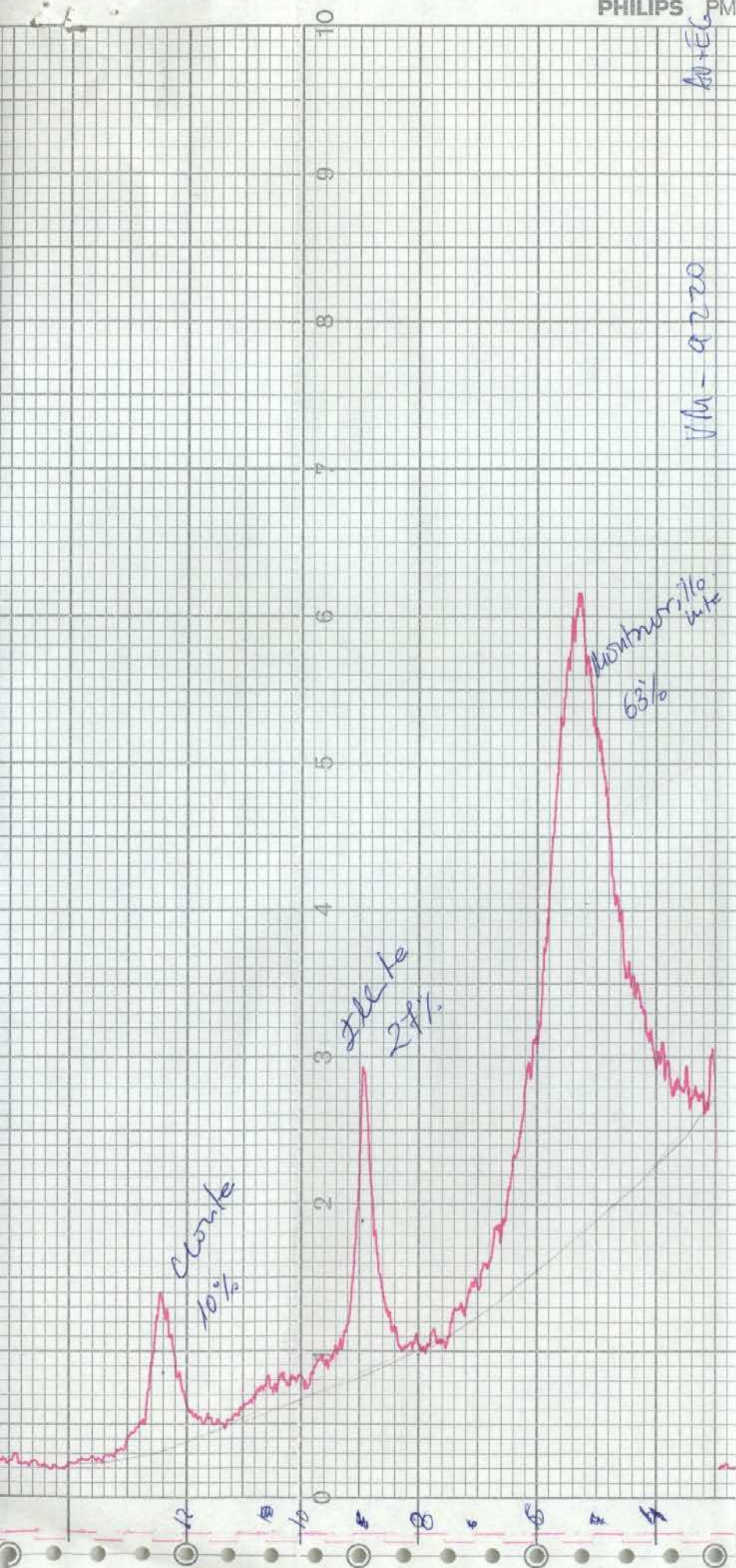
11/11/2014

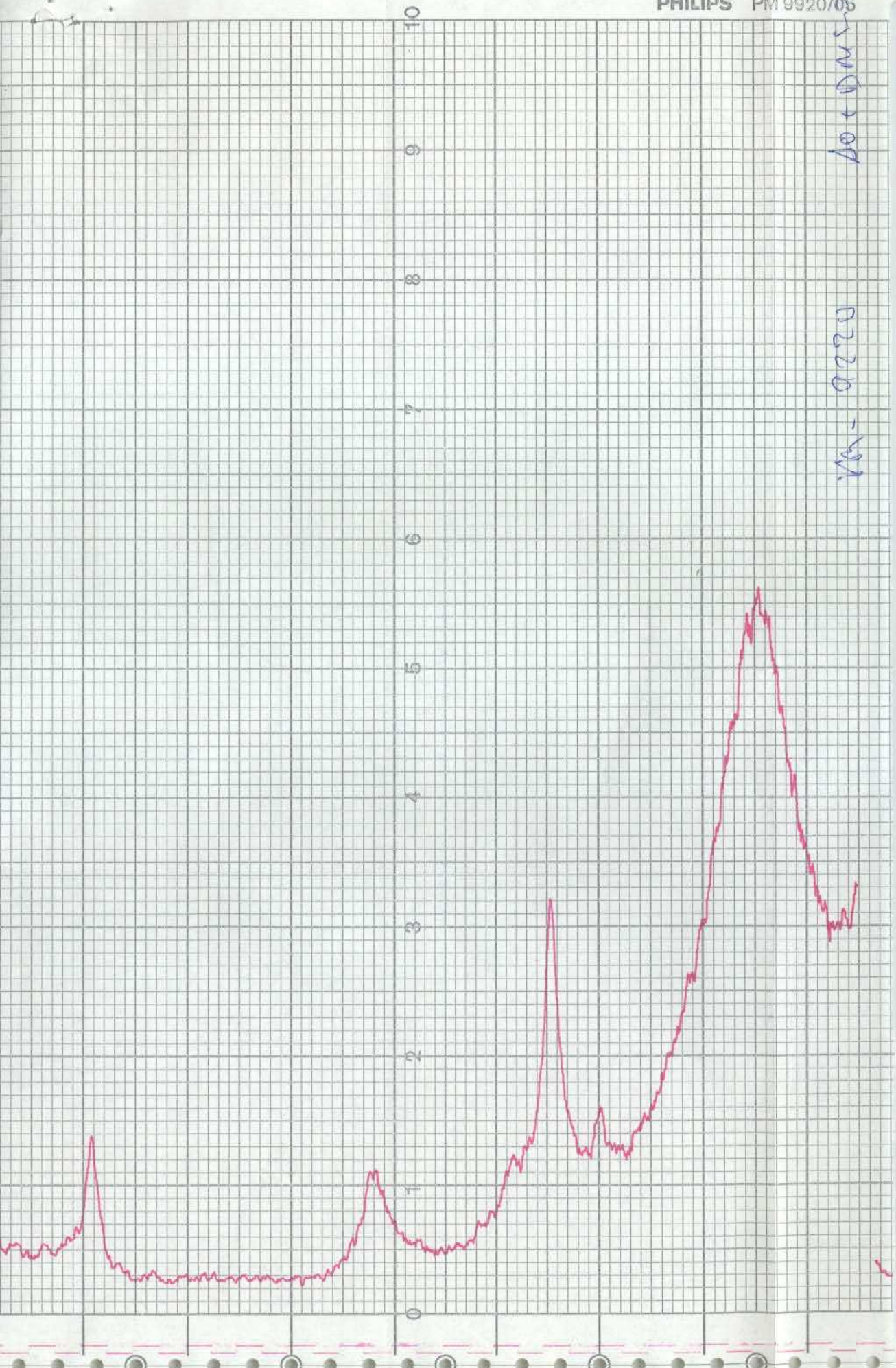
20+MUSO



AD-EG

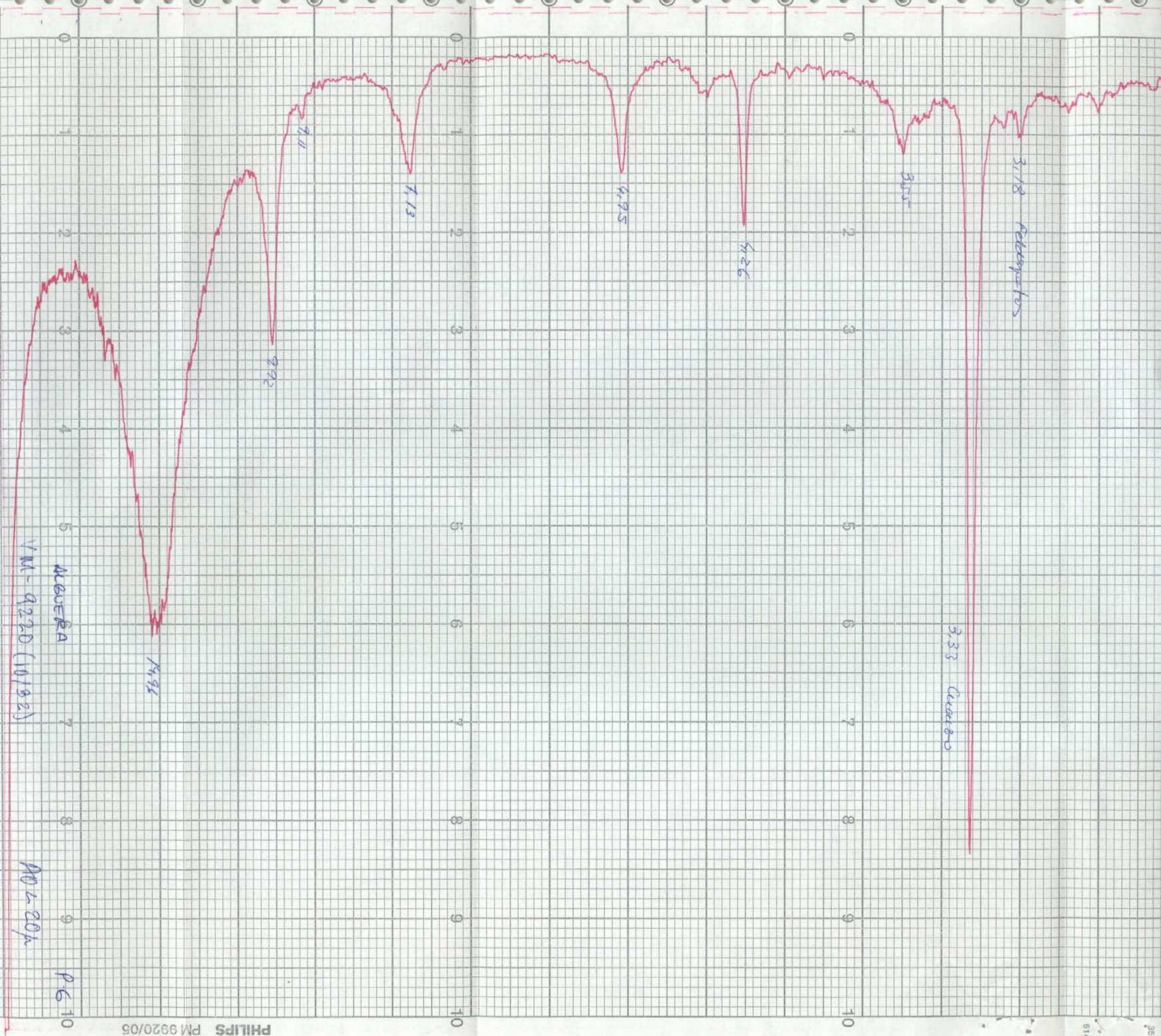
Vh - 0220





0220-021

A0 + DMS



VM-9220 (10/92)

ALBERTA

A0 < 20 μ

P-6 10